



Statistical Bulletin
January to December
2019

March 2020

EDITORIAL TEAM

Alfred M. Mwila
Simweemba Buumba
Cletus Sikwanda
Raymond Muyovwe

Director - Economic Regulation
Senior Manager - Research and Pricing
Economist - Research
Statistician -Research

VISION

A proactive, firm and fair energy regulator

MISSION STATEMENT

"To regulate the energy sector, in order to ensure the efficient provision of reliable and quality energy services and products"



FOREWORD

It gives me great pleasure to present to you the 2019 edition of the Energy Regulation Board (ERB)'s Statistical Bulletin. The bulletin has been prepared in line with the Institution's strategic objective of improving communication with all stakeholders.

The bulletin complements the Energy Sector Report and provides statistics and information on the performance of the energy sector. Specifically, it highlights statistics on licensing, pricing, electricity generation, petroleum consumption and other energy related statistics.

The report is tailored to be useful to policy makers, investors, Oil Marketing Companies, Independent Power Producers, utilities, researchers, academicians, and regulators. The report is available for free on the ERB website (www.erb.org.zm).

I am grateful to all stakeholders that provided valuable contributions and data used in the publication of this report. Further, in order to serve you better we welcome your comments and suggestions on areas for improvements.

Langiwe H. Lungu (Ms.)
Director General
March 2020

Table of Contents

EDITORIAL TEAM.....	ii
FOREWORD.....	iv
LIST OF FIGURES.....	vii
LIST OF TABLES	viii
LIST OF ABBREVIATIONS	ix
UNITS OF MEASUREMENT	ix
ACKNOWLEDGEMENT.....	x
EXECUTIVE SUMMARY.....	xi
1.0 LICENSING STATISTICS	1
1.1 ELECTRICITY AND RENEWABLE ENERGY SUB-SECTORS LICENSING.....	1
1.2 PETROLEUM SUB-SECTOR LICENSING.....	1
2.0 ELECTRICITY SUB-SECTOR STATISTICS	2
2.1 NATIONAL INSTALLED GENERATION CAPACITY	2
2.1.1 National Installed Electricity Generation Capacity by Technology.....	3
2.2 GENERATION SENT OUT	4
2.2.1 ZESCO's Generation from Large Hydro Power Plants.....	4
2.2.2 ZESCO's generation from small and mini hydro power plants.....	4
2.2.3 ZESCO's generation from diesel power plants	5
2.2.4 Generation from Independent Power Producers (IPPs)	5
2.3 PLANNED ELECTRICITY GENERATION PROJECTS	5
2.4 ZESCO ELECTRICITY EXPORTS AND IMPORTS	6
2.5 ELECTRICITY CONSUMPTION BY ECONOMIC SECTOR	8
2.6 CUSTOMER BASE BY UTILITY	9
2.7 REGIONAL AND DOMESTIC ELECTRICITY TARIFFS.....	10
2.7.1 Domestic Electricity tariffs	10
2.7.2 Northwestern Energy Corporation (NWECC) Electricity tariffs	11
3.0 PETROLEUM SUB-SECTOR STATISTICS.....	13
3.1 RETAIL SERVICE STATIONS PROVINCIAL DISTRIBUTION	14
3.2 PETROLEUM UPLIFTS BY OIL MARKETING COMPANIES	15
3.3 GOVERNMENT IMPORTATION OF PETROLEUM FEEDSTOCK.....	16
3.4 GOVERNMENT IMPORTATION OF PETROL AND LOW SULPHUR GAS OIL.....	17

3.5	INDENI REFINERY PRODUCTION OF PETROLEUM PRODUCTS	18
3.6	NATIONAL CONSUMPTION OF PETROLEUM PRODUCTS	20
3.7	MARKET SHARE FOR WHITE PETROLEUM PRODUCTS	22
3.8	OMCs MARKET SHARE FOR JET A-1	23
3.9	NATIONAL FUEL PUMP PRICE AND REGIONAL COMPARISON	24
3.9.1	REGIONAL COMPARISON OF PRICES FOR PETROL AND DIESEL.....	25

LIST OF FIGURES

Figure 1: National installed electricity generation capacity by technology as at 31 st December 2019	3
Figure 2: National installed electricity generation capacity by technology as at 31 st December 2019 vs 31 st December, 2018	3
Figure 3: Electricity Generation from ZESCO's large hydro power plants 2017, 2018 and 2019 ..	4
Figure 4: Generation sent out from ZESCO's small and mini hydro power plants, 2017, 2018 and 2019	4
Figure 5: Generation sent out from ZESCO's Diesel Power Plants 2017, 2018 and 2019	5
Figure 6: Trends in Electricity generation sent out by IPPs, 2017, 2018 and 2019	5
Figure 7: ZESCO's Imports and Exports, 2017, 2018 and 2019	7
Figure 8: Electricity Consumption by Economic Sector, 2017, 2018 and 2019.	8
Figure 9: Regional Electricity Tariffs Comparison	12
Figure 10: Players in the fuel supply chain	13
Figure 11: Government Importation of Petrol, 2017, 2018 & 2019	17
Figure 12: Government Importation of Low Sulphur Gasoil, 2017, 2018 & 2019	17
Figure 13: Market Share for White Petroleum Products by OMC, 2018 & 2019	22
Figure 14: Market Share for Jet A-1 by OMC, 2018 & 2019	23
Figure 15: National Fuel Pump Price trend, 2000-2019	24
Figure 16: Regional prices of Petrol and Diesel as at 31 st December, 2019	25
Figure 17: Regional prices of Petrol as at end of 2018 & 2019	26

LIST OF TABLES

Table 1: Electricity and renewable energy sub-sectors licensing for 2019	1
Table 2: Petroleum Sub-sector licensing for 2019.....	1
Table 3: National Installed Generation Capacity	2
Table 4: Expected Electricity Generation Projects, as at 31 st December, 2019	6
Table 5: ZESCO's Imports and Exports, 2017, 2018 and 2019	6
Table 6: Electricity Consumption by Economic Sector, 2017, 2018 and 2019.	9
Table 7: Customer base by utility as at 31st December, 2019	9
Table 8: ERB approved electricity tariffs as at 31st December 2019	10
Table 9: NWEK 2019 tariff schedule.....	11
Table 10: Retail Service Stations Distribution by Province, as at 31st December, 2019	14
Table 11: Actual Quantities of Petrol Uplifted at Government Fuel depots, 2017, 2018 & 2019.	15
Table 12: Actual Quantities of Diesel Uplifted at Government Fuel depots, 2017, 2018 & 2019	15
Table 13: Volumes of Petroleum Feedstock Imports, 2017, 2018 & 2019	16
Table 14: Monthly refinery production trends, 2019	18
Table 15: Monthly refinery production trends, 2018	18
Table 16: Monthly refinery production trends, 2017	19
Table 17: Total National Consumption of Selected Petroleum Products as 31 st December, 2019	20
Table 18: Total National Consumption of Selected Petroleum Products as at 31 st December, 2018.....	20
Table 19: Total National Consumption of Selected Petroleum Products as at 31st December, 2017	21
Table 20: Regional Comparison of Prices for Petrol and Diesel as at end of 2018 & 2019	25

LIST OF ABBREVIATIONS

ERB	Energy Regulation Board
HFO	Heavy Fuel Oil
INDENI	INDENI Petroleum Refinery Company Limited
IPP	Independent Power Producer
NFT	Ndola Fuel Terminal
OMC	Oil Marketing Company
SAPP	Southern African Power Pool
SADC	Southern African Development Community
TAZAMA	TAZAMA Pipelines Limited
ZESCO	ZESCO Limited

UNITS OF MEASUREMENT

Bbl	Barrels of oil (159 litres)
GWh	Giga-Watt hour (1,000 MWh)
K	Zambian Kwacha (ZMW)
Km	Kilometre
kV	Kilo Volt
kVA	Kilo Volt Amperes (1,000 Volt Amps)
kW	Kilo Watt
kWh	Kilo Watt Hour
MW	Mega Watt
MWh	Mega Watt Hour (1,000 kWh)
MT	Metric Tonne (in this document means a mass equivalent to 1,000 kg)
m ³	Cubic Meters
US\$	United States of America dollar

ACKNOWLEDGEMENT

We acknowledge the following organisations that provided data and information that has been used in the preparation of this bulletin:

- Copperbelt Energy Corporation Plc
- INDENI Petroleum Refinery Company Limited
- Lunsemfwa Hydropower Company Limited
- Maamba Collieries Limited
- Ndola Energy Company
- Oil Marketing Companies
- TAZAMA Pipelines Limited
- Itezhi –tezhi Power Corporation
- ZESCO Limited

EXECUTIVE SUMMARY

Highlights of key developments in the Energy Sector during the period January to December, 2019

The national installed capacity of electricity stood at 2,981.31 MW as at 31st December 2019 compared to 2,892.91 MW as at 31st December 2018. The increase was mainly due to the commissioning of the 54 MW Bangweulu and 34 MW Ngonye solar power plants. This led to the increase of the solar energy share to 2.99 percent of the total installed capacity. Meanwhile, hydro generation still dominated at 80.45 percent of hydro generation, followed by 10.06 percent of coal. In addition HFO comprised 3.69 percent with diesel having the least at 2.80 percent.

Following the poor rainfall pattern recorded in the 2018/2019 rain season generation sent out by ZESCO large hydro power plants decreased from 12,458 GWh in 2018 to 11,272.61 GWh in 2019. Similarly, the mini and small hydro power plants generation sent out decreased from 207.71 GWh in 2018 to 168.54 GWh in 2019. Meanwhile, generation from ZESCO's diesel power plants increased to 5.15 GWh from 4.53 GWh in 2018. Further, generation from Independent Power Plants also increased to 3,593.03 GWh in 2019 from 3,519.44 GWh in 2018.

The Government imports of petroleum feedstock increased to 704,657.11 MT in 2019 from 618,441 MT in 2018. Similarly, the importation of petrol by Government contracted suppliers increased from 184,971 M³ in 2018 to 257,719 M³. Similarly, low Sulphur gas oil also increased from 361,746 M³ in 2018 to 649,058 M³ in 2019.

Gas oil (Including Low Sulphur Gas Oil) remained the most consumed petroleum product in the period under review at 2,887,875 litres per day followed by petrol at 1,266,028 litres per day. The consumption of other products namely, Heavy Fuel oil, Jet A-1, Kerosene and LPG was 475,301 kgs per day, 99,956 litres, 37,091 litres and 34,846 kgs per day respectively. Total Zambia Limited and Puma Energy Plc continued to dominate the market for petroleum products in the country with a combined market share of 46.7 percent. However, this was a decline in market share compared to 49.8 percent in 2018.

1.0 LICENSING STATISTICS

1.1 ELECTRICITY AND RENEWABLE ENERGY SUB-SECTORS LICENSING

Table 1: Electricity and renewable energy sub-sectors licensing for 2019

Sub-sector	Type of License	Number of Licenses
Electricity	Generate, Distribute and Supply Electricity for Off-Grid system	1
	Generation of Electricity	2
	Manufacture, Wholesale Importation and Installation of Solar Energy Systems	28
	Supply of Electricity	1
Total		32

1.2 PETROLEUM SUB-SECTOR LICENSING

Table 2: Petroleum Sub-sector licensing for 2019

Sub-sector	Type of License	Number of Licenses
Petroleum	Blending and Packaging of Lubricants	1
	Distribute, Import and Export of Liquefied Petroleum Gas	9
	Distribute, Import and Export of Petroleum products	21
	Export of Liquefied Petroleum Gas	20
	Export of Liquefied Petroleum Gas (Butane)	6
	Importation of Lubricants	37
	Inclusion of Retail Sites	25
	Retail of Petroleum Products	5
	Retailing of Liquefied Petroleum Gas	1
	Road Transportation of Petroleum Products	24
Total		149

2.0 ELECTRICITY SUB-SECTOR STATISTICS

2.1 NATIONAL INSTALLED GENERATION CAPACITY

Table 3: National Installed Generation Capacity

Undertaking	Station	Machine Type	Installed Capacity MW)
ZESCO Limited	Kafue Gorge	Hydro	990
	Kariba North	Hydro	720
	Kariba North Extension	Hydro	360
	Victoria Falls	Hydro	108
	Lunzua River	Hydro	14.8
	Lusiwasi	Hydro	12
	Chishimba Falls	Hydro	6
	Musonda Falls	Hydro	10
	Shiwang'andu	Hydro	1
Itezhi-tezhi Power Corporation	Itezhi-tezhi	Hydro	120
Zengamina Limited	Ikelengi	Hydro	0.75
Lunsemfwa Hydro Power Company	Mulungushi	Hydro	32
	Lunsemfwa	Hydro	24
	Total Hydro		2398.55
Maamba Collieries Limited	Maamba Power Plant	Coal	300
	Total Coal		300
Copperbelt Energy Corporation Generation Plants	Luano	Diesel	40
	Bancroft	Diesel	20
	Kankoyo	Diesel	10
	Maclaren	Diesel	10
ZESCO Limited Generation Plants	Luangwa	Diesel	2.6
	Shang'ombo	Diesel	1
	Total Diesel		83.6
Ndola Energy Generation Plants	Ndola	Heavy Fuel Oil	110
	Total Heavy Fuel Oil		110
Rural Electrification Authority Generation Plants	Samfya	Solar	0.06
Copperbelt Energy Corporation	Kitwe	Solar	1
Muhanya Solar Limited	Sinda Village	Solar	0.03
Ngonye Power Limited	LSMFEZ	Solar	34
Bangweulu Power Company Ltd	LSMFEZ	Solar	54
Engie Power corner	Chitandika Village	Solar	0.028
Solera Power	Luangwa bridge	Solar	0.0128
Standard Microgrid	Kafue	Solar	0.0162
Mugurameno	Chirundu	Solar	0.01
	Total Solar		89.157
Grand Total			2,981.31

2.1.1 National Installed Electricity Generation Capacity by Technology

Figure 1: National installed electricity generation capacity by technology as at 31st December 2019

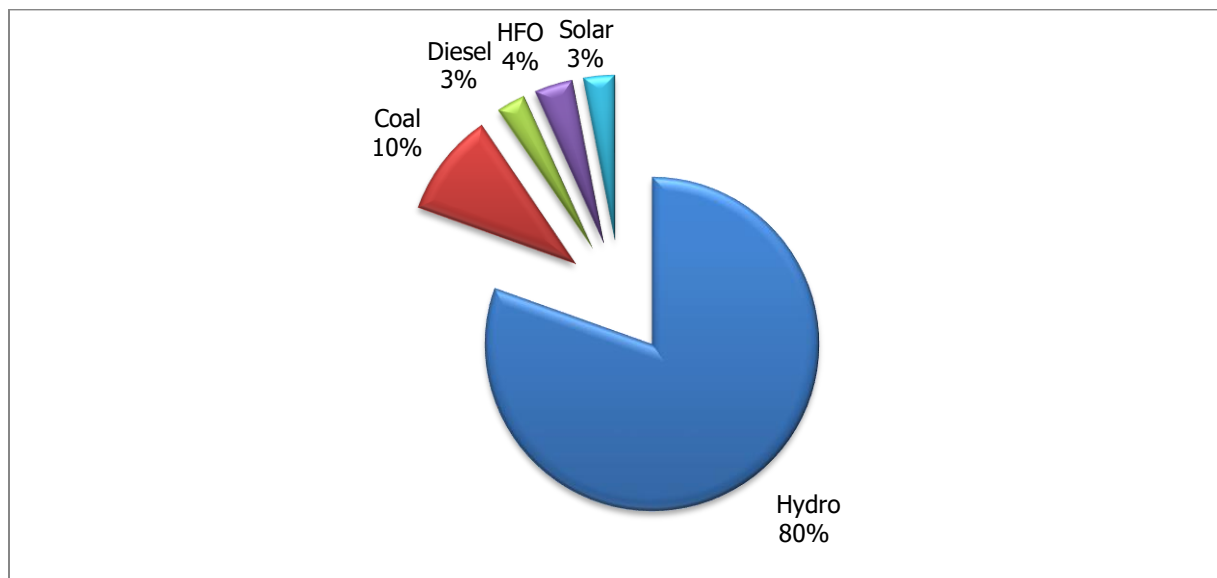
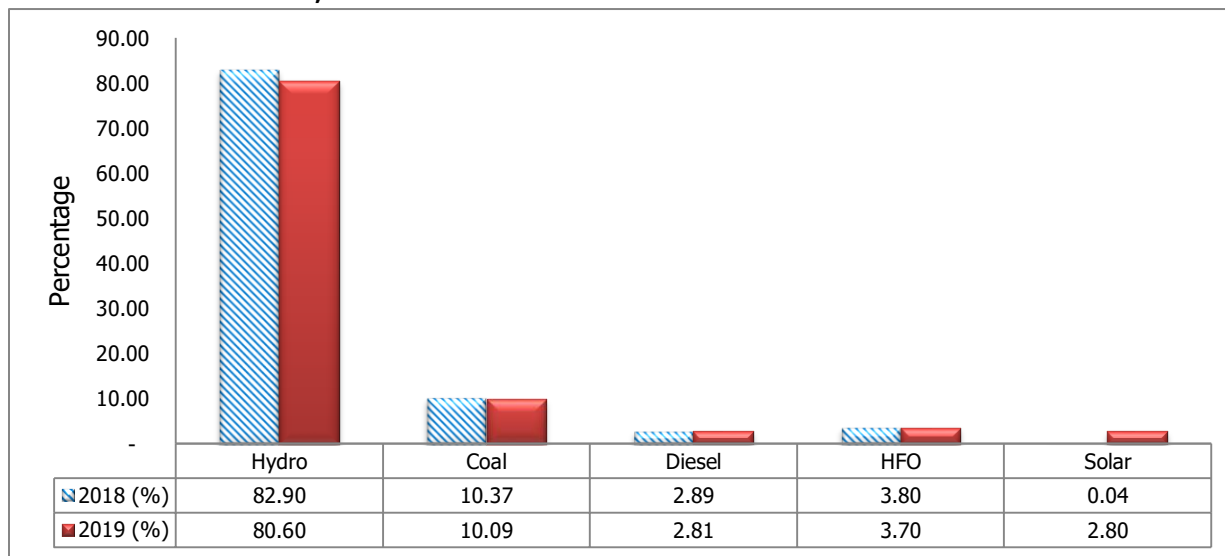


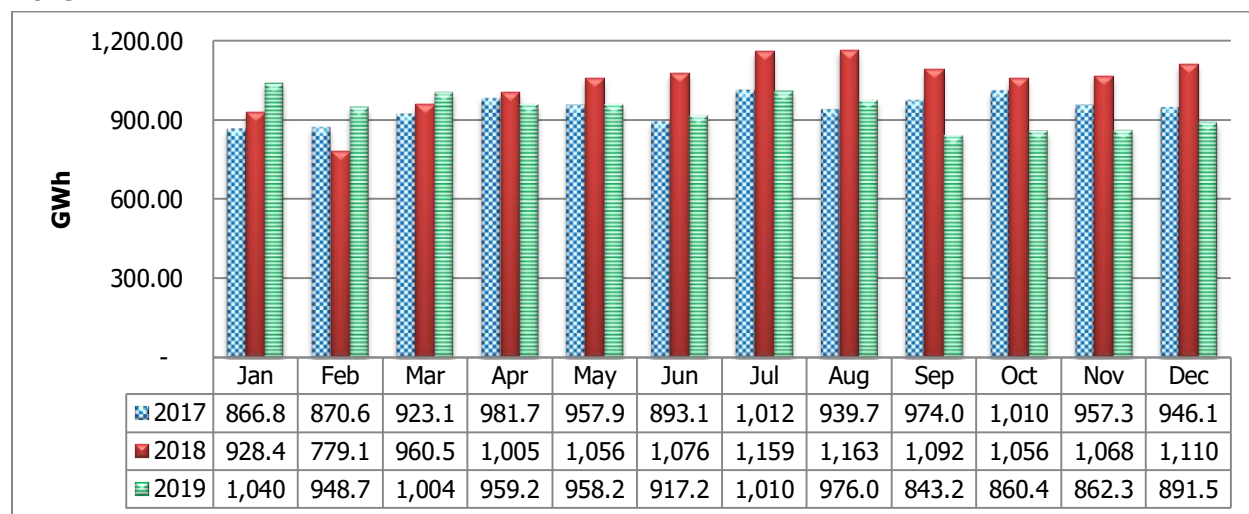
Figure 2: National installed electricity generation capacity by technology as at 31st December 2019 vs 31st December, 2018



2.2 GENERATION SENT OUT

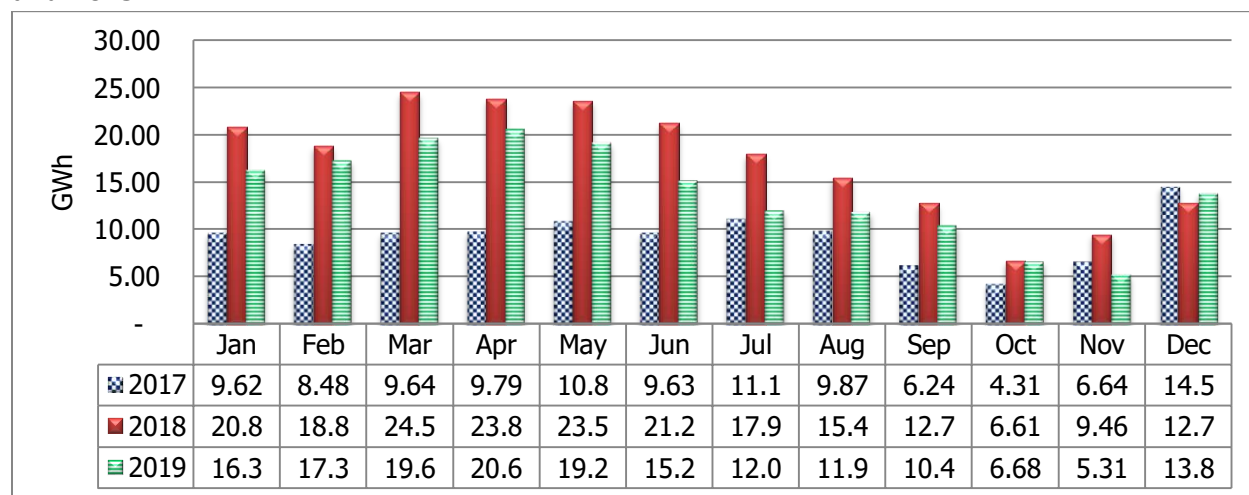
2.2.1 ZESCO's Generation from Large Hydro Power Plants

Figure 3: Electricity Generation from ZESCO's large hydro power plants 2017, 2018 and 2019¹



2.2.2 ZESCO's generation from small and mini hydro power plants

Figure 4: Generation sent out from ZESCO's small and mini hydro power plants, 2017, 2018 and 2019²

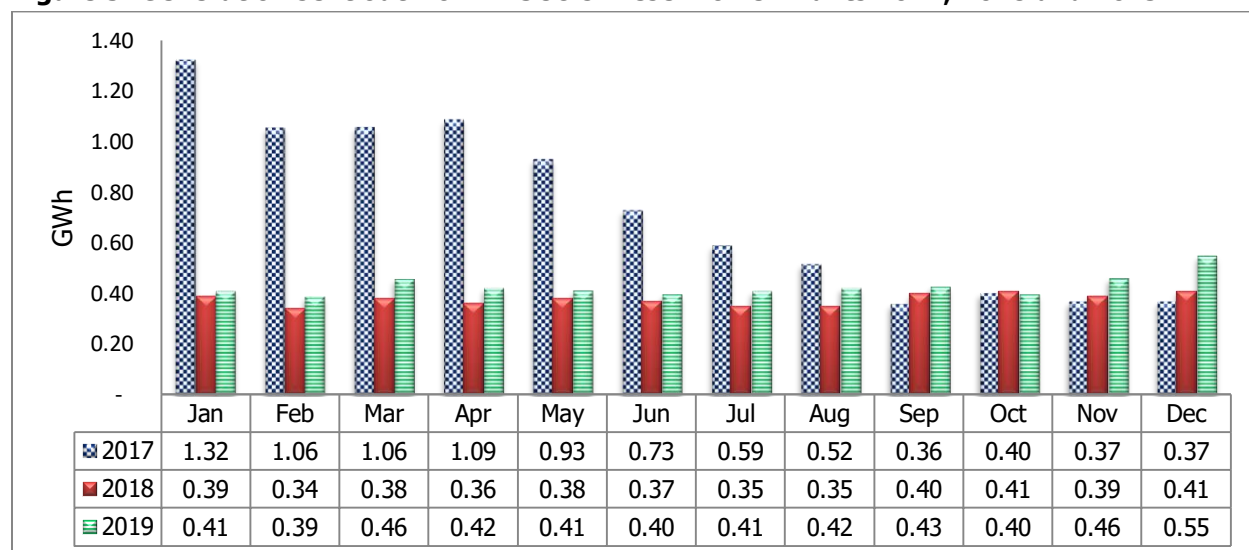


¹ ZESCO's large Hydro power plants refer to Kafue Gorge, Kariba North Bank, Kariba North Bank Extension Power Plants

² The Small & Mini-hydro refers to Lusiwasi, Chishimba falls, Musonda Fall, Lunzua and Shiwang'andu Power Plants.

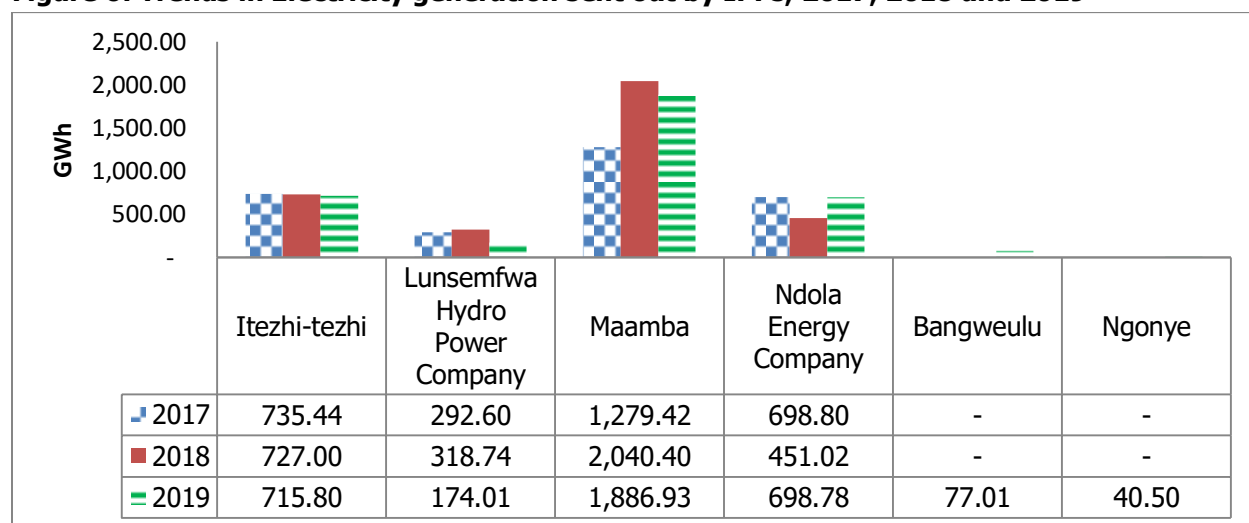
2.2.3 ZESCO's generation from diesel power plants

Figure 5: Generation sent out from ZESCO's Diesel Power Plants 2017, 2018 and 2019



2.2.4 Generation from Independent Power Producers (IPPs)

Figure 6: Trends in Electricity generation sent out by IPPs, 2017, 2018 and 2019



2.3 PLANNED ELECTRICITY GENERATION PROJECTS

Table 4: Expected Electricity Generation Projects, as at 31st December, 2019

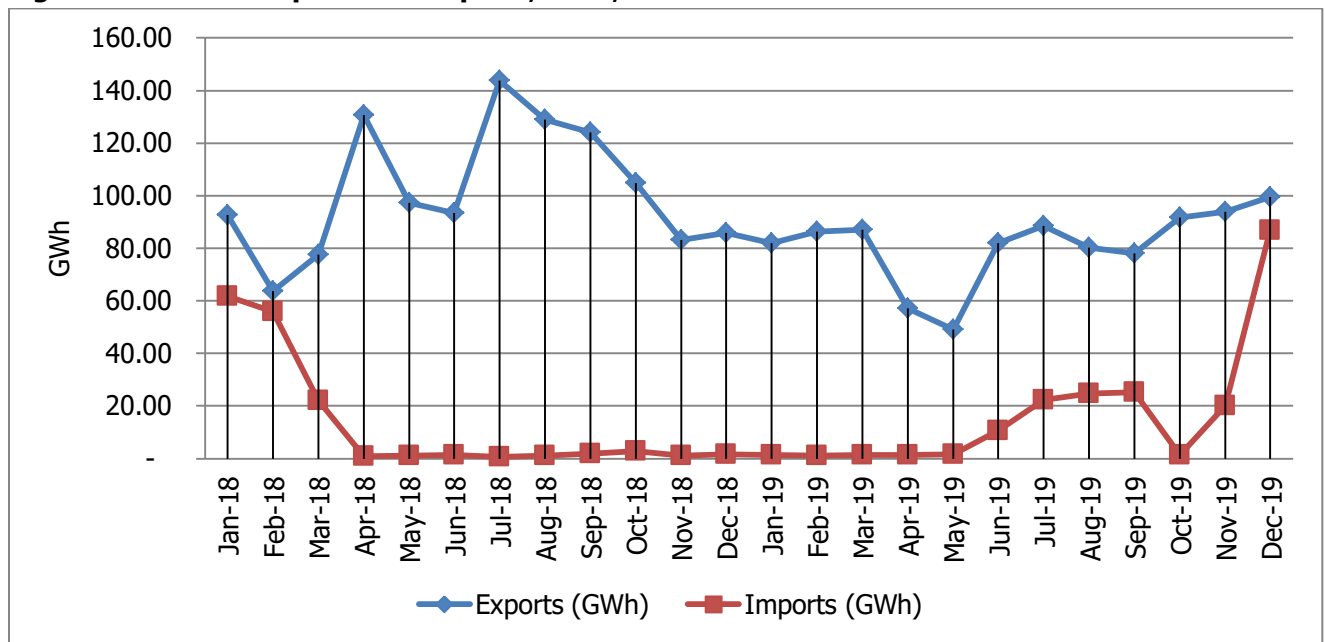
Project Name	Type	Owner	Capacity (MW)	Expected Completion Date
Kafue Gorge Lower Hydro Power Project	Hydro	ZESCO	750	August, 2020
Chishimba Falls	Hydro	ZESCO	15	TBA
Batoka Hydro Power Project	Hydro	ZESCO	1,200	TBA
Luapula River	Hydro	ZESCO	1,200	TBA
Maamba coal fired power plant II	Thermal	Maamba Collieries Limited	300	TBA
Kabompo Gorge	Hydro	CEC	34	TBA
Luisiwasi Upper	Hydro	ZESCO	15	TBA
Luisiwasi Lower	Hydro	ZESCO	86	TBA
Mkushi	Hydro	Lunsemfwa	65	TBA
MASEN	Wind/Solar	ZESCO/MASEN	200	TBA

2.4 ZESCO ELECTRICITY EXPORTS AND IMPORTS

Table 5: ZESCO's Imports and Exports, 2017, 2018 and 2019

ZESCO ELECTRICITY EXPORTS AND IMPORTS						
	2017		2018		2019	
Month	Exports (GWh)	Imports (GWh)	Exports (GWh)	Imports (GWh)	Exports (GWh)	Imports (GWh)
January	64.40	114.64	92.55	61.67	81.84	1.28
February	67.96	65.22	63.67	55.97	86.26	1.19
March	91.11	56.29	77.61	22.13	87.17	1.24
April	111.05	41.44	130.58	0.86	57.16	1.38
May	122.03	58.10	97.22	1.01	49.16	1.56
June	97.56	58.82	93.39	1.35	81.99	10.60
July	89.23	60.37	143.73	0.64	88.54	22.33
August	76.91	57.65	128.87	1.23	80.35	24.79
September	83.65	63.19	124.09	1.86	78.00	25.25
October	85.73	64.40	104.73	2.84	91.58	1.38
November	87.07	58.80	83.23	1.04	93.95	20.23
December	86.22	54.02	85.81	1.63	99.56	86.93
Total	1,062.92	752.94	1,225.48	152.23	975.56	198.16

Figure 7: ZESCO's Imports and Exports, 2017, 2018 and 2019



2.5 ELECTRICITY CONSUMPTION BY ECONOMIC SECTOR

Figure 8: Electricity Consumption by Economic Sector, 2017, 2018 and 2019.

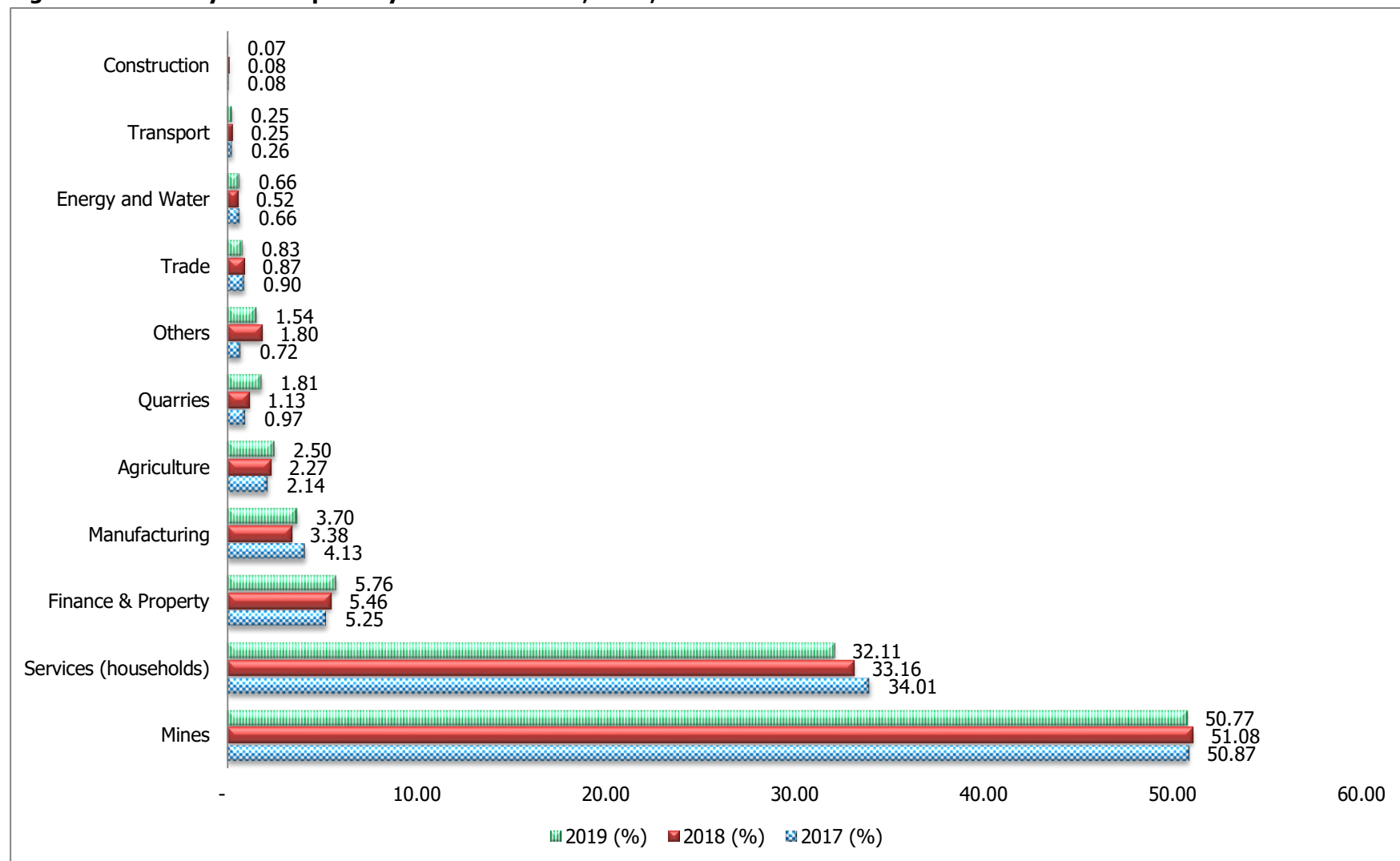


Table 6: Electricity Consumption by Economic Sector, 2017, 2018 and 2019.

Sector/Month	2017 (GWh)	2017 (%)	2018 (GWh)	2018 (%)	2019 (GWh)	2019 (%)
Mines	6,202.00	50.87	6,681.88	51.08	6,360.29	50.77
Services (Households)	4,146.85	34.01	4,336.92	33.16	4,022.54	32.11
Finance & Property	640.04	5.25	713.87	5.46	721.53	5.76
Manufacturing	503.39	4.13	442.15	3.38	463.71	3.70
Agriculture	261.49	2.14	297.03	2.27	312.56	2.50
Quarries	118.15	0.97	147.61	1.13	227.25	1.81
Others	87.29	0.72	235.08	1.80	193.25	1.54
Trade	110.21	0.90	113.85	0.87	103.36	0.83
Energy and Water	80.88	0.66	68.54	0.52	82.94	0.66
Transport	31.95	0.26	32.47	0.25	31.23	0.25
Construction	9.62	0.08	10.83	0.08	8.35	0.07
Grand Total	12,191.87	100.00	13,080.23	100.00	12,527.02	100.00

2.6 CUSTOMER BASE BY UTILITY

Table 7: Customer base by utility as at 31st December, 2019

SECTOR	ZESCO		NWECC	
	TOTAL	PERCENTAGE (%)	TOTAL	PERCENTAGE (%)
Residential	916,669.00	90.1	3234	97.2
Maximum Demand	8,460.00	0.8		
Commercial	80,144.00	7.9	89	2.8
Agriculture	815.00	0.1		
Social	11,253.00	1.1	3	0.1
Total	1,017,341.00	100.0		100.0

2.7 REGIONAL AND DOMESTIC ELECTRICITY TARIFFS

2.7.1 Domestic Electricity tariffs

Table 8: ERB approved electricity tariffs as at 31st December 2019

Customer category	Tariff components	Approved Tariffs as at 31st December 2019	Approved Tariffs Effective 1 st January 2020
1. METERED RESIDENTIAL (Prepaid) (capacity 15 kVA)			
R1 – Consumption from 1 - 100 kWh in a month	Energy charge/kWh	0.15	0.47
R2 – Consumption between 101kWh - 300 kWh in a month	Energy charge/kWh	0.89	0.85
R3 – Consumption above 300kWh	Energy charge/kWh	Nil	1.94
	Fixed Monthly Charge	18.23	Abolished
2. Commercial Tariffs (capacity 15kVA)			
C1 – Consumption up to 200kWh	Energy charge/kWh	0.54	1.07
C2 – Consumption above 200kWh	Energy charge/kWh	Nil	1.85
	Fixed Monthly Charge	96.41	Abolished
3. Social Services			
Schools, Hospital, Orphanages, churches, water pumping & street lighting	Energy charge K/kWh	0.49	1.19
	Fixed Monthly Charge	83.84	203.73
4. Maximum Demand Tariffs			
MD1- Capacity between 16 - 300 kVA	MD Charge (K/KVA/Month)	24.45	42.79
	Energy Charge (K/kWh)	0.35	0.61
	Fixed Monthly Charge (K/Month)	239.44	419.02
	Off Peak MD Charge (K/KVA/Month)	12.22	21.39
	Off Peak Energy Charge (K/kWh)	0.26	0.46
	Peak MD Charge (K/KVA/Month)	30.56	53.48
	Peak Energy Charge (K/kWh)	0.44	0.77
MD2- Capacity 301 to 2,000 kVA	MD Charge (K/KVA/Month)	45.73	80.03
	Energy Charge (K/kWh)	0.3	0.53
	Fixed Monthly Charge (K/Month)	478.84	837.97
	Off Peak MD Charge (K/KVA/Month)	22.87	40.01
	Off Peak Energy Charge (K/kWh)	0.23	0.39
	Peak MD Charge (K/KVA/Month)	57.17	100.03
	Peak Energy Charge (K/kWh)	0.37	0.66
MD3- Capacity 2,001 to 7,500kVA	MD Charge (K/KVA/Month)	73.06	126.39
	Energy Charge (K/kWh)	0.25	0.43
	Fixed Monthly Charge (K/Month)	1,014.55	1,755.17
	Off Peak MD Charge (K/KVA/Month)	36.52	63.2
	Off Peak Energy Charge (K/kWh)	0.18	0.32
	Peak MD Charge (K/KVA/Month)	91.33	157.99

	Peak Energy Charge (K/kWh)	0.3	0.54
MD4-Capacity 7500kVA to 25,000 kVA	MD Charge (K/KVA/Month)	73.47	127.39
	Energy Charge (K/kWh)	0.21	0.36
	Fixed Monthly Charge (K/Month)	2,029.13	3,510.39
	Off Peak MD Charge (K/KVA/Month)	36.73	63.55
	Off Peak Energy Charge (K/kWh)	0.16	0.27
	Peak MD Charge (K/KVA/Month)	91.84	158.88
	Peak Energy Charge (K/kWh)	0.25	0.45
Bulk Distributors tariff	Maximum Demand customers - MD Charge/KVA/month	Nil	58.6
(Purchasers of Power for distribution)	Retail customers – Energy charge / kWh	Nil	0.49
NOTE; The above tariffs are:- (a) Exclusive of 3% Government excise duty (b) Exclusive of 16% Value Added Tax (VAT)			

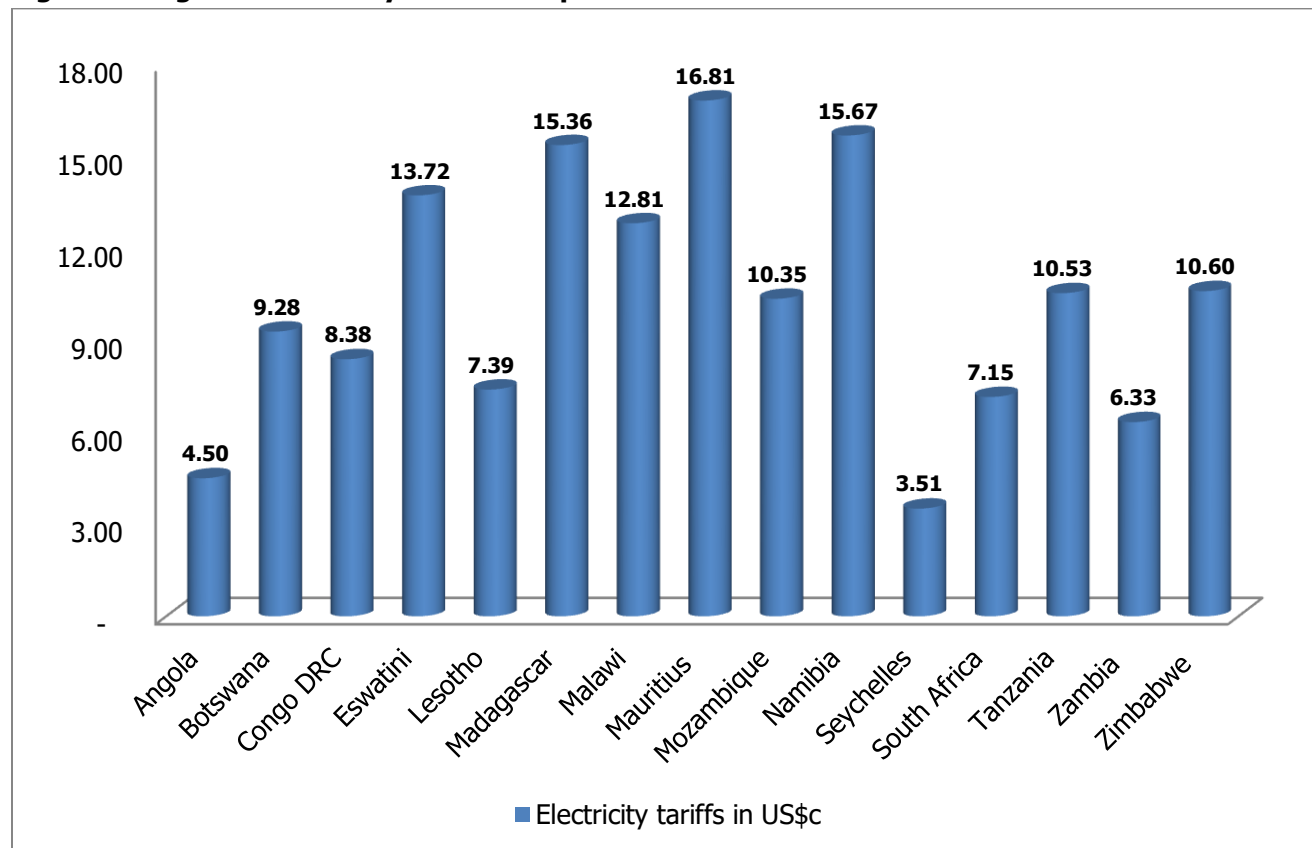
2.7.2 Northwestern Energy Corporation (NWEK) Electricity tariffs

Table 9: NWEK 2019 tariff schedule

CUSTOMER CATEGORY	2019 TARIFF
Residential Customers Tariffs	
R1-Consumption up-to 200KWh in a month	0.35
R2-Consumption above 200KWh in a month	0.89
Fixed Monthly Charge	18.23
Commercial Customers (15KVA)	
Energy Charge	0.71
Capacity Charge	45.72
Fixed Monthly Charge	131.25
Social Services	
Energy Charge	0.71
Capacity Charge	131.25

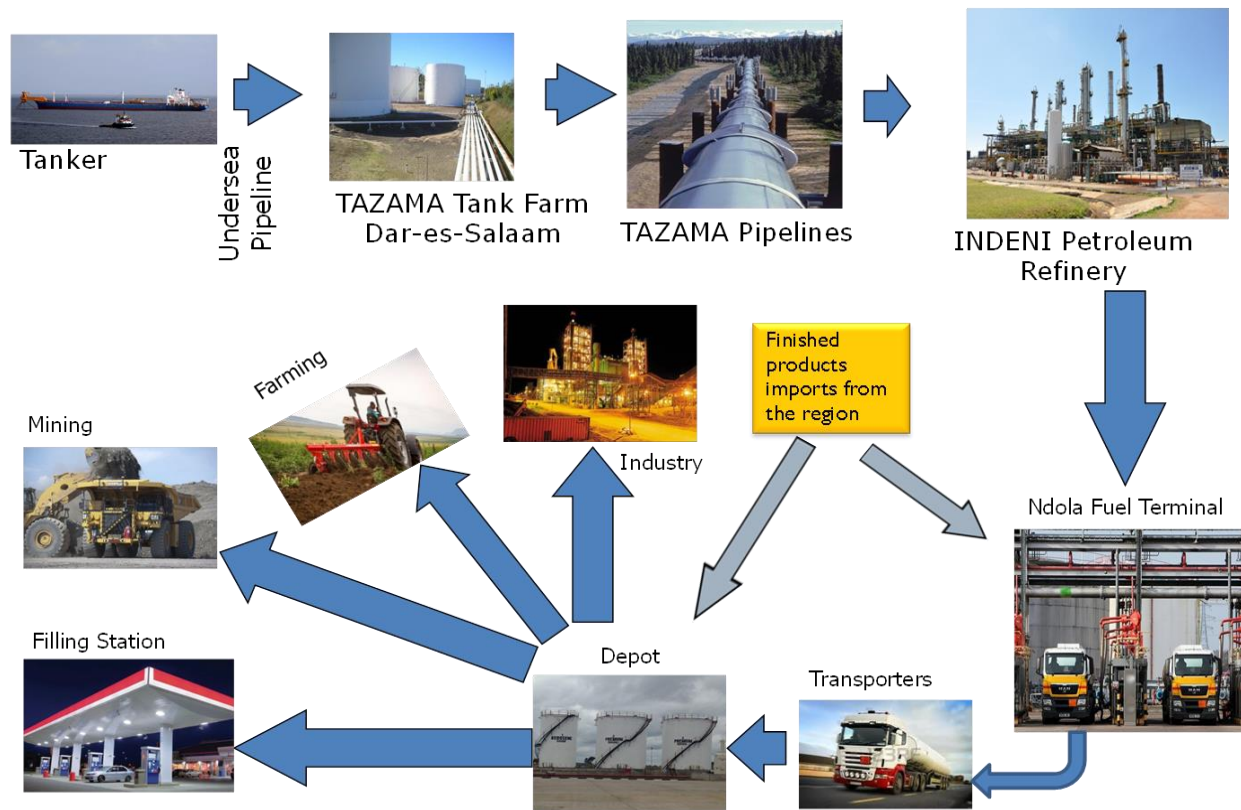
Regional tariffs at 31st December 2019

Figure 9: Regional Electricity Tariffs Comparison



3.0 PETROLEUM SUB-SECTOR STATISTICS

Figure 10: Players in the fuel supply chain



3.1 RETAIL SERVICE STATIONS PROVINCIAL DISTRIBUTION

Table 10: Retail Service Stations Distribution by Province, as at 31st December, 2019

OMC/Dealer	Central	Copperbelt	Eastern	Luapula	Lusaka	Muchinga	Northern	Northwestern	Southern	Western	Grand Total
Collum Lunm Tian Ltd					1						1
Eco Petroleum Limited		4		1		1	1				7
Endrone Petroleum					1		1	1	1	1	5
Enigma Petroleum Ltd	1										1
Hashi Energy Zambia Ltd	3				1	1					5
Hass Petroleum Zambia Ltd		2			2					1	5
Kobil Zambia Ltd	2	7	3		11				5	1	29
Lake Petroleum Ltd	3	9			9	1		1	1		24
LBM Investments Limited		1		1		1	3				6
Luapula Oils				1							1
Mount Meru Petroleum Zambia Ltd	7	6	2	1	18	1		2	4		41
Ngucha energy Corporation				1	5			1		1	8
Oasis Oil Ltd			4		3						7
Oilbay Zambia Limited	1										1
Oryx oil Zambia Limited		6	2	1	4				2		15
Petroda Zambia Ltd		6			13			1			20
Puma Energy	3	15	5	1	22	1	1	2	6	3	59
Ravasia Petroleum					1						1
SGC Investments		12	2		8	1	1	1	2		27
Spectra Oil Corporation					4						4
StarOil		1									1
Suban Petroleum (Z) Ltd.		1									1
Total Zambia Limited	7	15	1	1	25	2	1	2	3	1	58
Tribute Investments Ltd								2			2
Ufuel Zambia	1										1
Vivo Energy (Engen Petroleum)	1	7	1		18		2		3		32
WWW Investments	1										1
ZHONGKUANG Zambia Services Co. Ltd		1									1
Grand Total	30	93	20	8	146	9	10	13	27	8	364

3.2 PETROLEUM UPLIFTS BY OIL MARKETING COMPANIES

Table 11: Actual Quantities of Petrol Uplifted at Government Fuel depots, 2017, 2018 & 2019

Petrol	2019		2018		2017	
Month/ Product	Quantity (m³)	Average No Trucks/Day	Quantity (m³)	Average No Trucks/Day	Quantity (m³)	Average No Trucks/Day
January	34,848.771	32	37,919	35	24,082	22
February	32,547.835	33	31,130	32	29,188	30
March	36,122.639	33	35,482	33	35,182	32
April	35,680.084	34	36,101	34	30,650	29
May	40,410.714	37	40,355	37	40,066	37
June	36,422.110	35	37,842	36	34,019	32
July	38,512.669	36	35,624	33	37,257	34
August	41,125.671	38	42,119	39	40,062	37
September	43,048.924	41	36,206	34	39,687	38
October	39,621.112	37	38,085	35	35,067	32
November	41,562.993	40	37,137	35	38,559	37
December	38,070.325	35	38,037	35	40,514	37
Grand Total	457,973.847	36	446,036	35	424,332	33

Table 12: Actual Quantities of Diesel Uplifted at Government Fuel depots, 2017, 2018 & 2019

Diesel³	2019		2018		2017	
Month/ Product	Quantity (m³)	Average No Trucks/Day	Quantity (m³)	Average No Trucks/Day	Quantity (m³)	Average No Trucks/Day
January	51,696.466	48	61,660	57	38,182	35
February	48,387.230	49	47,687	49	42,589	43
March	53,056.958	49	51,279	47	46,274	43
April	55,795.152	53	58,092	55	48,703	46
May	65,583.723	60	66,802	62	62,013	57
June	61,442.394	59	66,282	63	60,297	57
July	65,731.455	61	69,873	64	63,345	58
August	67,847.356	63	91,823	85	68,329	63
September	72,752.304	69	88,108	84	71,471	68
October	73,430.749	68	90,038	83	66,327	61
November	74,235.140	71	78,208	74	66,248	63
December	65,344.076	60	71,747	66	62,120	57
Grand Total	755,303.003	59	841,599	66	695,898	54

³ Includes low Sulphur Gas Oil

3.3 GOVERNMENT IMPORTATION OF PETROLEUM FEEDSTOCK

Table 13: Volumes of Petroleum Feedstock Imports, 2017, 2018 & 2019

Year	Cargo Name	Month	Tonnage (MT)
2019	MT. Desh Samman III	Jan-19	102,916.04
	MT. Desh Samman IV	Mar-19	102,799.17
	MT. Fos Picasso	May-19	105,078.95
	MT. Fos Picasso 2nd	Jun-19	102,124.99
	MT. Stride	Aug-19	97,643.87
	MT Al Jalaa	Oct-19	100,154.56
	MT. Alba	Dec-19	93,939.52
	Total		704,657.11
2018	MT DESH MAHIMA IV	Jan-18	103,700.68
	MT DESH MAHIMA V	Mar-18	104,125.92
	MT DESH SAMMAN	May-18	104,099.81
	MT DESH SURAKSHA	Jul-18	103,215.69
	MT DESH MAHIMA VI	Sep-18	102,610.08
	MT DESH SAMMAN II	Nov-18	100,688.68
	Total		618,440.86
2017	MT. Desh Mahima II	Apr-17	105,506
	MT. Desh Garima	May-17	104,802
	MT. Desh Mahima III	Jul-17	105,000
	MT. Desh Garima II	Sep-17	102,129
	MT. Desh Garima III	Dec-17	102,000
	Total		519,437.00

3.4 GOVERNMENT IMPORTATION OF PETROL AND LOW SULPHUR GAS OIL

Figure 11: Government Importation of Petrol, 2017, 2018 & 2019

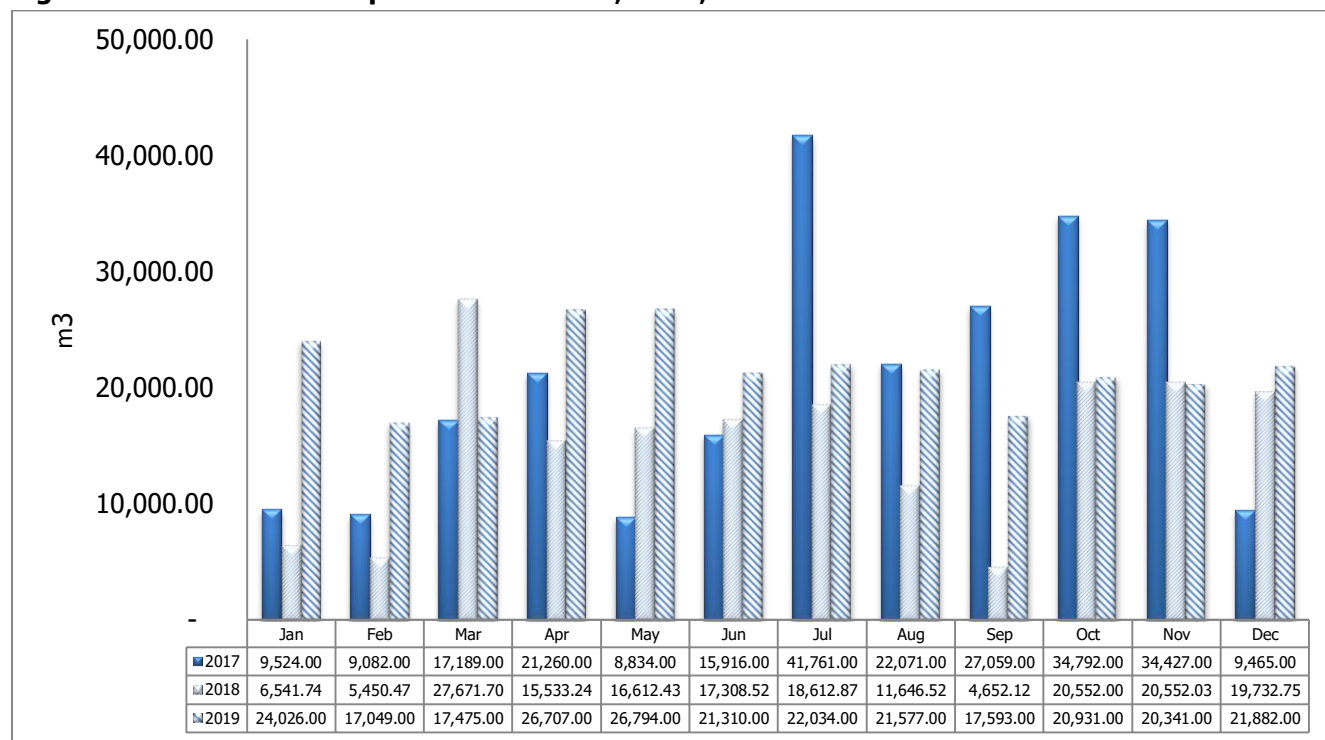
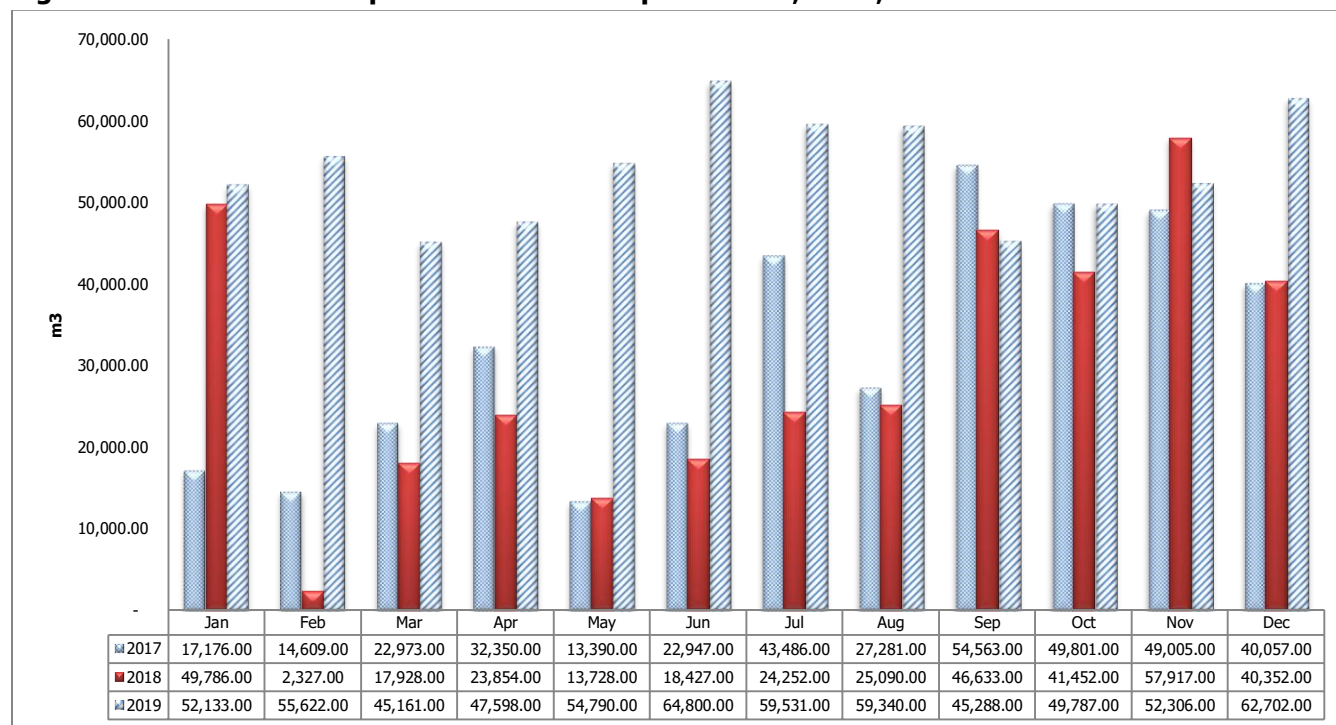


Figure 12: Government Importation of Low Sulphur Gasoil, 2017, 2018 & 2019



3.5 INDENI REFINERY PRODUCTION OF PETROLEUM PRODUCTS

Table 14: Monthly refinery production trends, 2019⁴

Month/Products	Gasoil (MT)	Unleaded Petrol (MT)	Kerosene (MT)	Jet A1 (MT)	LPG/Commercial Butane (MT)	HFO (MT)
January	32,135.47	15,152.25	1,283.68	8	1261.82	15,644.60
February	23,108.63	11,179.07	1,778.97	235.58	859.68	13,630.38
March	26,176.73	11,464.70	966.14	703	722.4	13,995.42
April	26,266.34	14,416.19	1,253.94	1,252.31	1307.32	11,039.75
May	18,523.94	9,260.81	1,180.08	-9	981.76	6,724.32
June	28,116.57	13,255.77	924.99	7	1309.62	13,830.59
July	26,249.67	13,253.43	1,274.21	-2	1090.84	16,590.68
August	27,643.24	12,364.12	1,239.31	2	1070.3	17,576.80
September	27,373.60	10,574.81	1,039.30	-18.82	818.22	18,551.64
October	20,894.51	9,577.70	853.55	-19.67	278.9	16,635.85
November	25,948.08	11,520.47	531.22	-245	808.04	20,131.74
December	11,664.54	5,816.54	312		423.28	8,052.50
Grand Total	294,101.32	137,835.86	12,637.39	1,913.40	10,932.18	172,404.27

Table 15: Monthly refinery production trends, 2018

Month/Products	Gasoil (MT)	Unleaded Petrol (MT)	Kerosene (MT)	Jet A1 (MT)	LPG/Commercial Butane (MT)	HFO (MT)
Jan	27,952.00	12,809.00	3,379.00	-	1055	10,094.00
Feb	24,951.00	9,344.00	1,684.00	1,243.00	848	8,874.00
Mar	27,022.00	12,556.00	1,578.00	2,492.00	964	8,848.00
Apr	23,430.00	9,608.00	1,572.00	1,436.00	785	9,724.00
May	29,062.00	12,814.00	886	1,061.00	983	11,334.00
Jun	25,485.00	15,140.00	1,973.00	1,503.00	1232	13,278.00
Jul	26,754.00	16,415.00	2,133.00	2,293.00	1246	13,065.00
Aug	23,292.00	14,610.00	1,893.00	-6	867	13,157.00
Sep	24,340.00	14,780.00	2,130.00	922	744	12,483.00
Oct	11,462.00	4,629.00	309	17	100	4,358.00
Nov	4,089.00	1,344.00	-99	-3	-169	1,857.00
Dec	26,453.00	11,684.00	3,100.00	-10	372	11,679.00
Grand Total	274,292.00	135,733.00	20,538.00	10,948.00	9,027.00	118,751.00

⁴ A negative figure indicates quantities of a product that was upgraded or downgraded into another product

Table 16: Monthly refinery production trends, 2017⁵

Month/Product	Gasoil (MT)	Unleaded Petrol (MT)	Kerosene (MT)	Jet A1 (MT)	LPG/Commercial Butane (MT)	HFO (MT)
Jan	12,049.00	6,921.00	1,049.00	-	350.00	6,615.00
Feb	18,814.00	10,809.00	564	386	812.00	13,682.00
Mar	18,026.00	11,244.00	1,487.00	-	664.00	13,961.00
Apr	21,430.00	13,548.00	1,540.00	-	1,024.00	16,379.00
May	17,402.00	11,358.00	2,545.00	-	625.00	17,994.00
Jun	23,666.00	11,401.00	1293	-	956.00	16,204.00
Jul	19,394.00	11,166.00	1,284.00	-	601.00	19,246.00
Aug	24,074.00	12,626.00	3,740.00	-	904.00	21,246.00
Sep	18,438.00	9,354.00	1,090.00	-	630.00	13,588.00
Oct	1,793.00	1,764.00	699	-	150.00	8,271.00
Nov	18,770.00	11541	1133	-	917.00	18,806.00
Dec	22,816.00	11,859.00	1,706.00		1,135.00	10,239.00
Grand Total	216,672.00	123,591.00	18,130.00	386	8,768.00	176,231.00

⁵ A negative figure indicates quantities of a product that was upgraded or downgraded into another product

3.6 NATIONAL CONSUMPTION OF PETROLEUM PRODUCTS⁶

Table 17: Total National Consumption of Selected Petroleum Products as 31st December, 2019

Month/ Product	Domestic Kerosene	Gas Oil	Heavy Fuel Oil	Industrial Kerosene	Jet A-1	Low Sulphur Gas Oil	LPG	Unleaded Petrol	Grand Total
Jan-19	965,645.89	52,009,772.62	8,418,824.12	35,000.00	3,041,016.00	22,207,359.19	626,507.35	35,334,720.18	122,638,845.35
Feb-19	1,062,341.27	48,336,653.85	9,924,404.27		1,756,666.00	20,670,102.26	478,151.30	31,563,200.62	113,791,519.58
Mar-19	1,010,201.95	50,153,296.90	3,505,171.76	35,000.00	3,176,970.00	22,104,427.10	485,328.29	35,318,993.65	115,789,389.65
Apr-19	1,027,575.90	56,214,110.80	19,870,147.28	36,000.00	3,288,450.00	22,628,176.79	630,483.68	35,579,038.67	139,273,983.12
May-19	974,085.69	68,411,888.79	22,110,576.22	41,000.00	2,832,142.00	24,627,627.43	654,898.57	42,894,671.07	162,546,889.76
Jun-19	1,247,433.02	62,876,004.25	12,630,427.57	7,007.00	2,926,782.00	24,523,185.72	804,727.44	38,033,536.20	143,049,103.19
Jul-19	1,781,479.71	70,439,682.05	20,752,840.63	56,222.00	3,320,455.00	25,202,091.25	822,014.07	40,081,976.80	162,456,761.50
Aug-19	1,281,785.78	72,616,263.06	12,275,579.85	271,203.00	3,418,082.00	26,387,876.90	759,550.31	42,413,288.66	159,423,629.56
Sep-19	1,153,121.81	71,984,896.32	12,328,319.00	163,797.69	3,165,982.00	25,427,682.45	775,321.85	41,945,249.69	156,944,370.80
Oct-19	826,905.05	70,917,753.01	18,139,960.93	56,000.00	3,083,078.00	27,435,272.67	632,510.77	39,949,240.11	161,040,720.54
Nov-19	748,387.10	75,504,723.76	16,690,249.65	71,332.00	2,736,955.00	25,479,896.01	545,104.24	40,291,823.41	162,068,471.17
Dec-19	639,775.80	70,592,238.95	16,838,678.79	46,924.00	3,737,534.00	17,360,119.99	626,214.39	38,694,698.59	148,536,184.52
Grand Total	12,718,738.97	770,057,284.36	173,485,180.05	819,485.69	36,484,112.00	284,053,817.76	7,840,812.25	462,100,437.66	1,747,559,868.74

Table 18: Total National Consumption of Selected Petroleum Products as at 31st December, 2018

Month/ Product	Domestic Kerosene	Gas Oil	Heavy Fuel Oil	Industrial Kerosene	Jet A-1	Low Sulphur Gas Oil	LPG	Unleaded Petrol	Grand Total
Jan-18	1,789,450.81	54,174,337.19	15,722,540.62	55,000.00	2,637,972.00	20,768,219.73	419,718.53	34,683,288.22	130,250,527.10
Feb-18	1,349,493.66	47,724,193.95	16,255,734.54	76,502.00	1,965,133.00	17,933,518.89	592,036.96	32,339,551.54	118,236,164.54
Mar-18	1,236,283.74	50,712,956.75	15,456,764.72	55,000.00	2,784,184.00	22,516,029.62	525,367.57	36,142,807.60	129,429,394.00
Apr-18	1,456,226.43	56,965,160.45	3,306,086.97	55,000.00	3,300,512.00	20,363,117.57	671,345.64	34,952,444.01	121,069,893.07
May-18	1,713,528.96	62,695,183.19	4,929,286.74	107,621.00	3,637,423.00	22,662,623.89	741,352.49	37,684,455.28	134,171,474.55
Jun-18	1,619,130.63	64,862,244.69	2,808,906.00	42,888.00	3,051,749.00	21,568,771.18	882,219.12	37,314,221.22	132,150,129.84
Jul-18	1,426,665.26	64,337,734.67	3,288,233.96	43,490.00	2,071,485.00	23,764,501.07	660,018.55	37,815,276.43	133,407,404.94
Aug-18	1,944,556.27	67,249,334.54	37,722,716.79	36,000.00	3,761,637.00	24,152,613.22	647,815.10	38,925,088.79	174,439,761.71
Sep-18	1,826,162.79	64,100,848.90	13,871,677.72	107,111.00	3,038,409.00	23,106,618.84	575,631.21	37,240,470.09	143,866,929.55
Oct-18	1,481,791.43	63,101,349.28	6,866,336.86	177,835.00	3,127,912.00	25,222,079.93	527,656.96	37,562,788.70	138,067,750.16
Nov-18	1,346,026.61	75,194,930.04	13,926,296.81	5,000.00	2,010,518.00	8,352,447.02	430,930.13	35,186,816.00	136,452,964.61
Dec-18	1,302,503.03	58,685,605.97	10,750,458.73	36,000.00	2,708,195.00	20,525,732.54	448,945.62	36,191,524.41	130,648,965.30
Grand Total	18,491,819.62	729,803,879.62	144,905,040.47	797,447.00	34,095,129.00	250,936,273.50	7,123,037.87	436,038,732.29	1,622,191,359.38

⁶ All products are in litres except for LPG and HFO which are in kgs

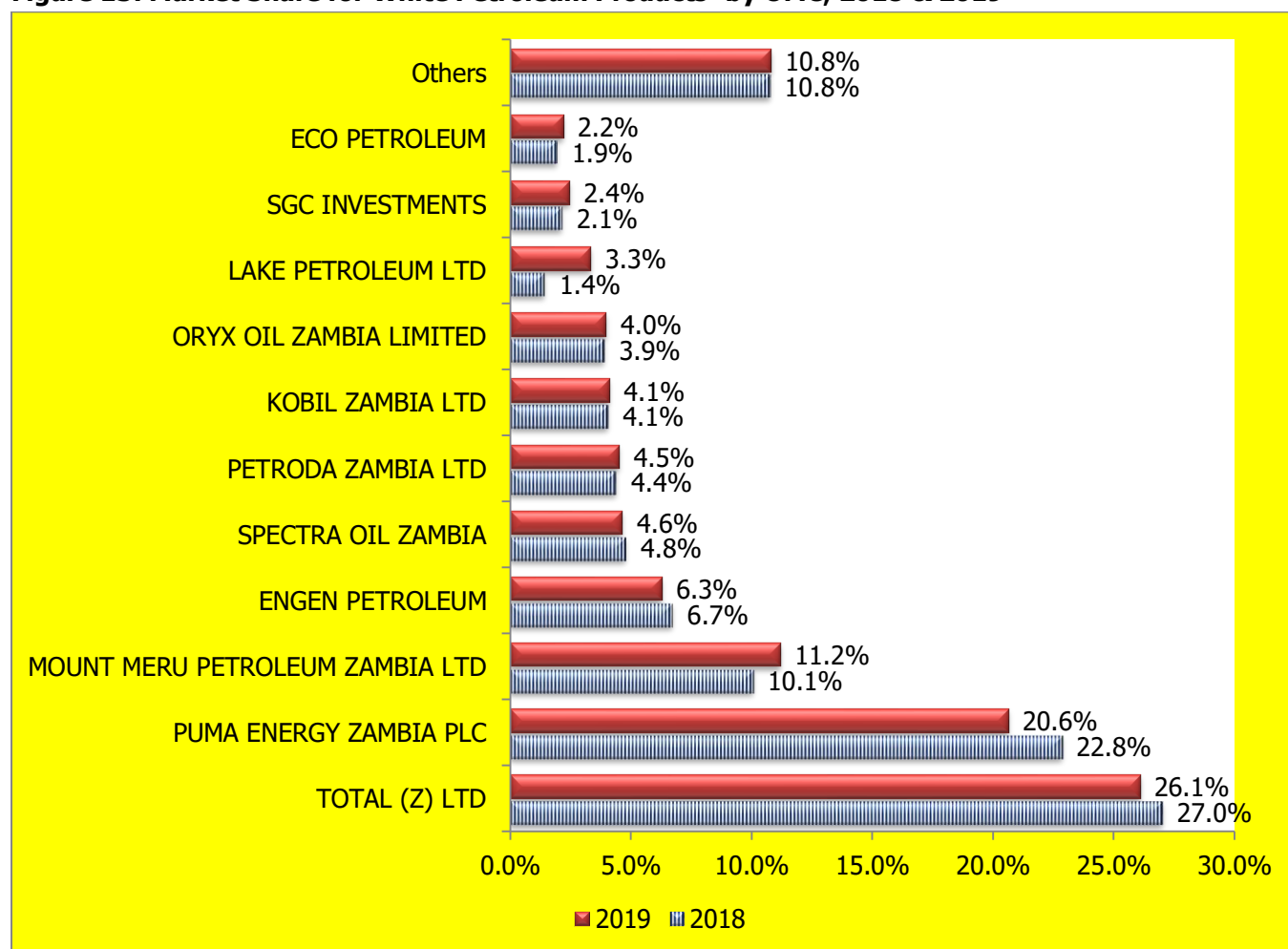
Table 19: Total National Consumption of Selected Petroleum Products as at 31st December, 2017⁷

Month/ Product	Domestic Kerosene	Gas Oil	Heavy Fuel Oil	Industrial Kerosene	Jet A-1	Low Sulphur Gas Oil	LPG	Unleaded Petrol	Grand Total
Jan-17	997,276.29	46,112,431.41	5,660,637.64	89,949.00	2,423,818.00	20,521,310.55	495,685.27	34,169,650.53	110,470,758.69
Feb-17	1,126,920.02	43,594,157.62	8,149,469.36	113,000.00	2,264,885.00	17,878,072.16	331,463.16	31,209,592.20	104,667,559.52
Mar-17	1,343,386.74	46,732,573.76	9,102,244.43	101,197.00	2,327,304.00	19,942,423.68	378,099.76	35,214,245.32	115,141,474.69
Apr-17	1,376,898.54	48,241,879.44	12,055,577.90	125,000.00	2,675,283.00	21,909,049.51	371,950.78	33,442,619.69	120,198,258.86
May-17	1,726,067.90	60,625,268.32	14,525,690.05	121,869.00	2,951,903.00	21,236,089.49	376,861.07	36,904,097.09	138,467,845.92
Jun-17	1,728,442.10	58,516,699.74	15,308,042.76	96,874.00	2,614,064.00	24,862,341.49	352,698.70	36,422,371.09	139,901,533.88
Jul-17	1,581,539.74	64,051,250.61	14,834,996.52	121,976.00	3,115,165.00	19,803,809.52	354,078.91	36,308,603.97	140,171,420.27
Aug-17	2,267,137.37	72,769,002.49	21,368,345.97	127,703.00	3,127,298.00	16,456,654.65	404,362.31	39,086,192.90	155,606,696.69
Sep-17	2,104,933.48	67,695,821.29	16,298,371.02	204,705.00	2,949,932.00	19,980,597.95	411,946.87	36,977,812.00	146,624,119.61
Oct-17	1,713,209.41	69,285,550.97	13,725,818.73	324,250.00	2,700,166.00	22,011,830.48	330,226.39	38,765,096.97	148,856,148.95
Nov-17	1,530,171.73	65,173,187.14	15,777,771.71	234,911.00	2,393,433.00	20,081,190.00	503,788.65	37,387,120.85	143,081,574.08
Dec-17	1,236,498.27	59,476,519.42	14,959,400.97	35,848.00	3,248,889.89	18,857,882.57	407,878.47	38,699,443.53	136,922,361.12
Grand Total	18,732,481.59	702,274,342.20	161,766,367.10	1,697,282.00	32,792,140.89	243,541,252.00	4,719,040.34	434,586,846.10	1,600,109,752.22

⁷ All products are in litres except for LPG and HFO which are in kgs

3.7 MARKET SHARE FOR WHITE PETROLEUM PRODUCTS

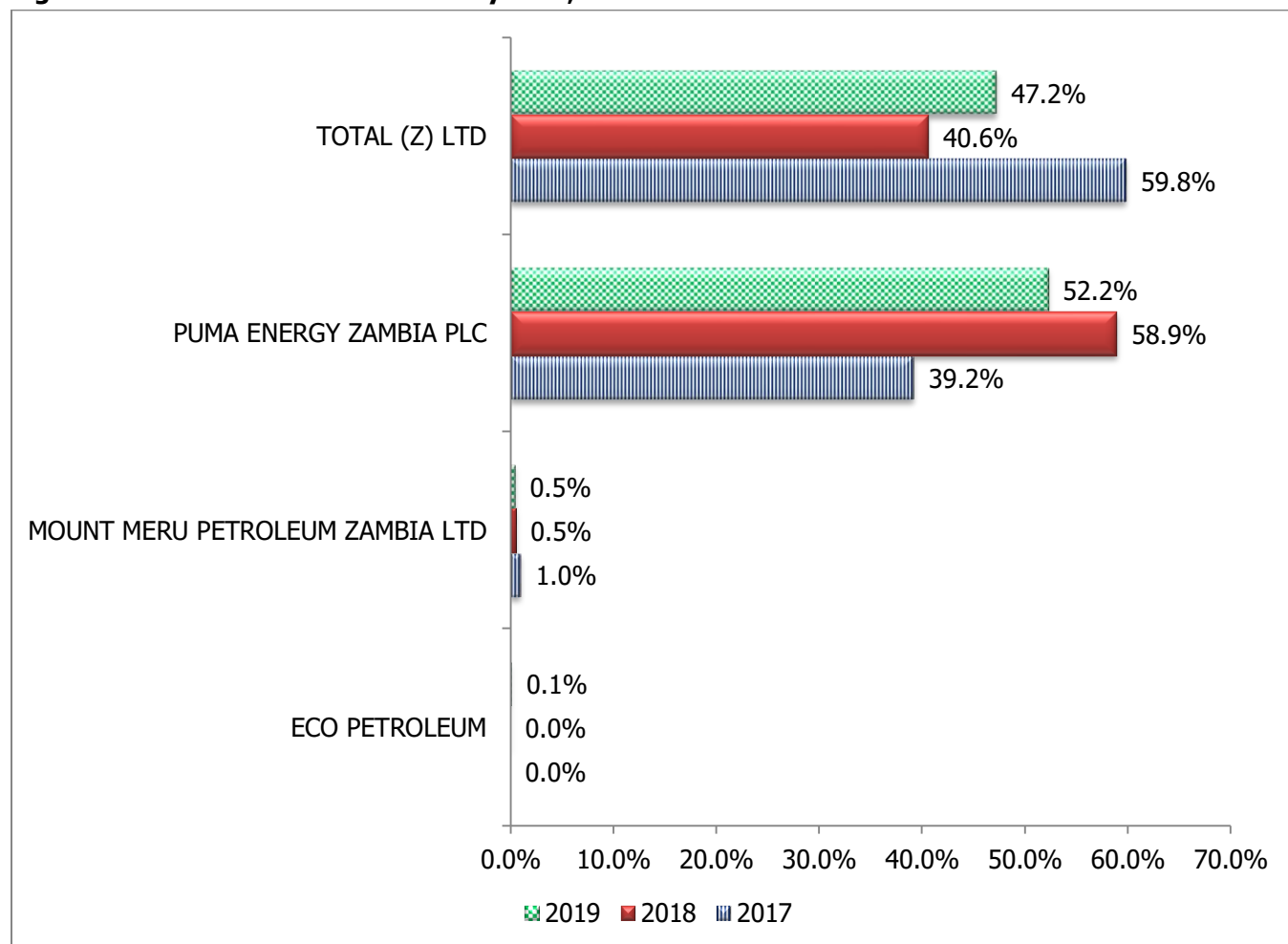
Figure 13: Market Share for White Petroleum Products⁸ by OMC, 2018 & 2019



⁸ Used to refer to Unleaded Petrol, Diesel (including low Sulphur gas oil) and Kerosene

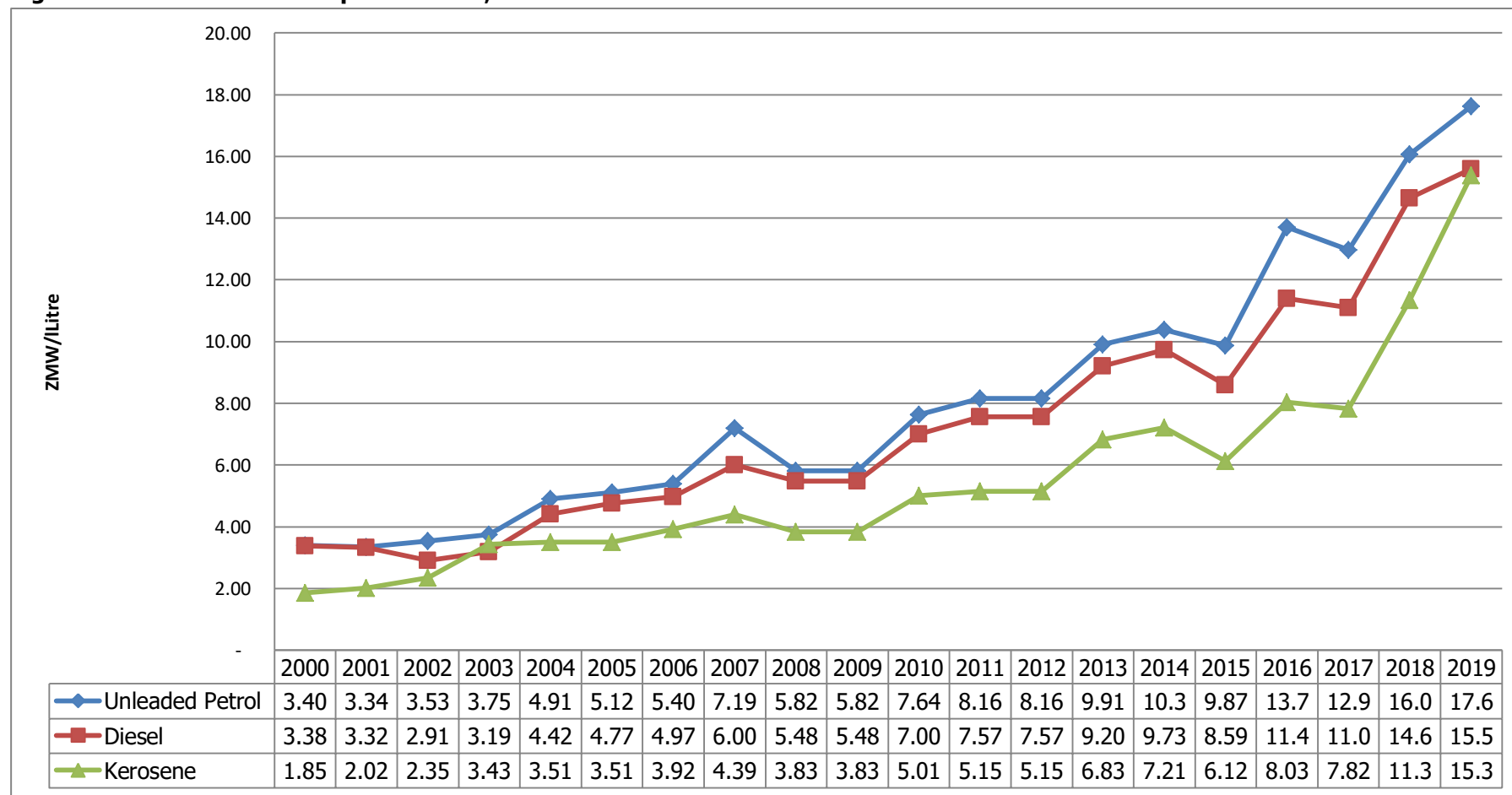
3.8 OMCs MARKET SHARE FOR JET A-1

Figure 14: Market Share for Jet A-1 by OMC, 2018 & 2019



3.9 NATIONAL FUEL PUMP PRICE AND REGIONAL COMPARISON

Figure 15: National Fuel Pump Price trend, 2000-2019



3.9.1 REGIONAL COMPARISON OF PRICES FOR PETROL AND DIESEL

Figure 16: Regional prices of Petrol and Diesel as at 31st December, 2019

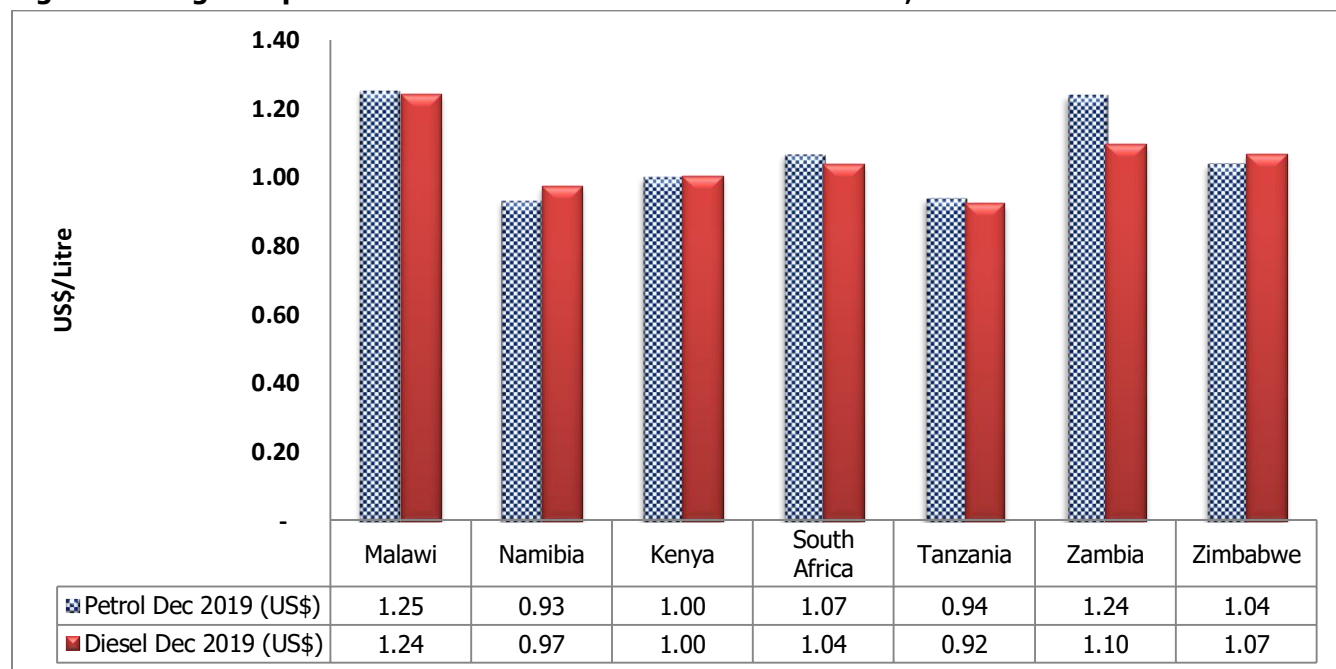


Table 20: Regional Comparison of Prices for Petrol and Diesel as at end of 2018 & 2019

Fuel prices in USD per litre - Dec 2019 vs Dec 2018				
	Petrol Dec 2018	Petrol Dec 2019	Diesel Dec 2018	Diesel Dec 2019
Malawi	1.25	1.25	1.29	1.24
Namibia	0.89	0.93	0.97	0.97
Kenya	1.11	1.00	1.10	1.00
South Africa	1.06	1.07	1.02	1.04
Tanzania	1.06	0.94	1.06	0.92
Zambia	1.34	1.24	1.23	1.10
Zimbabwe	1.38	1.04	1.34	1.07

Figure 17: Regional prices of Petrol as at end of 2018 & 2019

